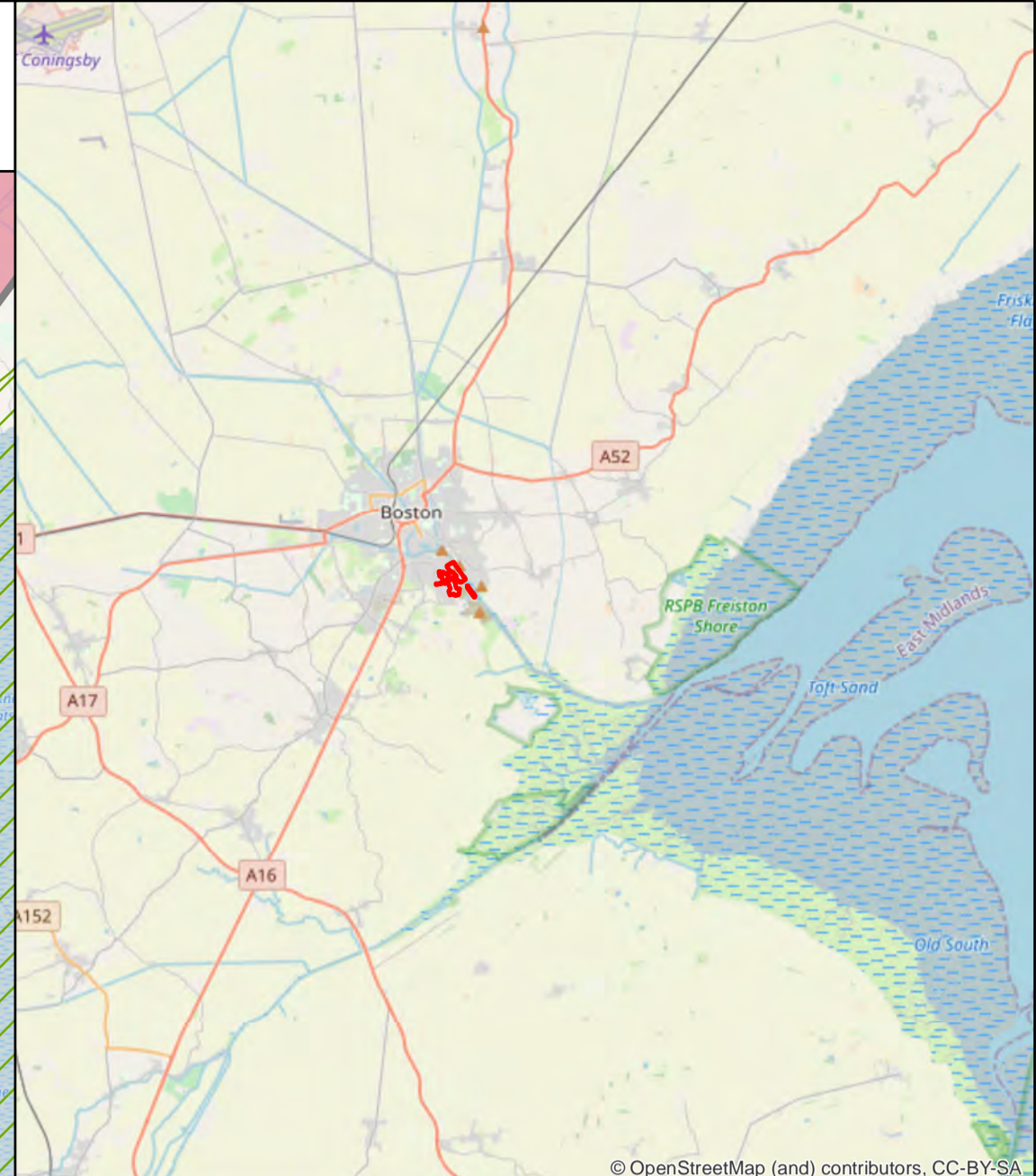
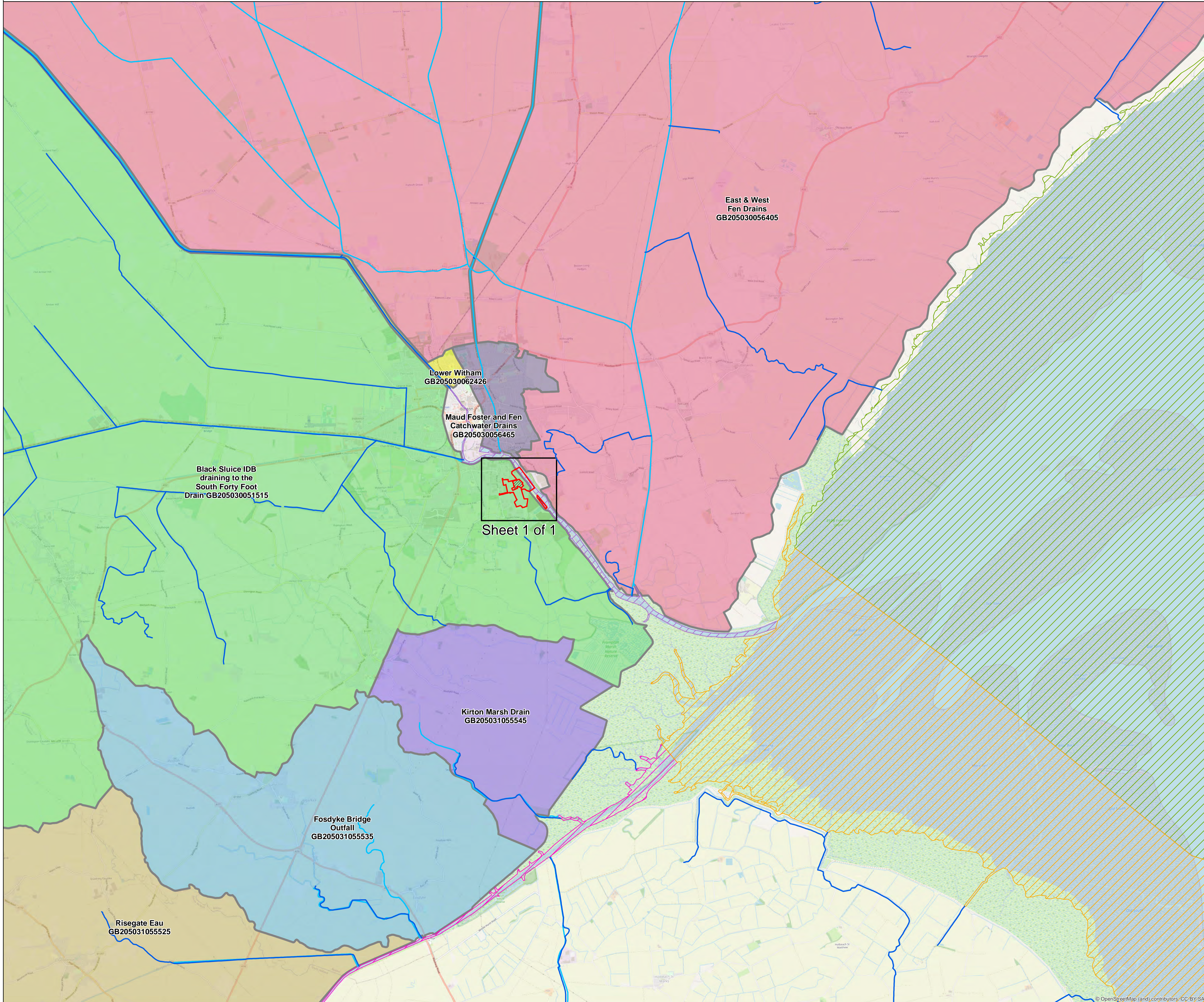
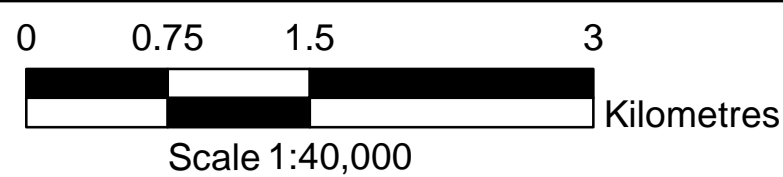


BOSTON ALTERNATIVE ENERGY FACILITY DEVELOPMENT CONSENT ORDER
Regulation 5(2)(o) Overview of
Water Bodies in a River Basin Management Plan
BOSTON BOROUGH COUNCIL - Sheet 1 of 1



Key

Order limits	Risegate Eau
Habitat Mitigation Area	Water Framework Directive (WFD) Transitional and Coastal Water Bodies
Land outside Order limits	Wash Inner
Water Framework Directive (WFD) River Water Body Catchment Area	Wash Outer
Black Sluice IDB draining to the South Forty Foot Drain	Welland
East & West Fen Drains	Water Framework Directive (WFD) River Water Bodies
Fosdyke Bridge Outfall	River Transfer Water Bodies
Kirton Marsh Drain	
Lower Witham	
Maud Foster and Fen Catchwater Drains	

Note: Scale is for context purposes.

Royal HaskoningDHV
Enhancing Society Together

Rightwell House,
 Bretton,
 Peterborough, PE3 8DW
 Tel +44 (0)1733 334455
 Email info.peterborough@rhdhv.com
 Website www.royalhaskoningdhv.com

APPPLICANT **ALTERNATIVE USE
 BOSTON PROJECTS LTD**

Disclaimer
 Do not scale from this drawing. Check all dimensions on site before fabrication or setting out. This document is copyright and may not be reproduced without permission of the owner.

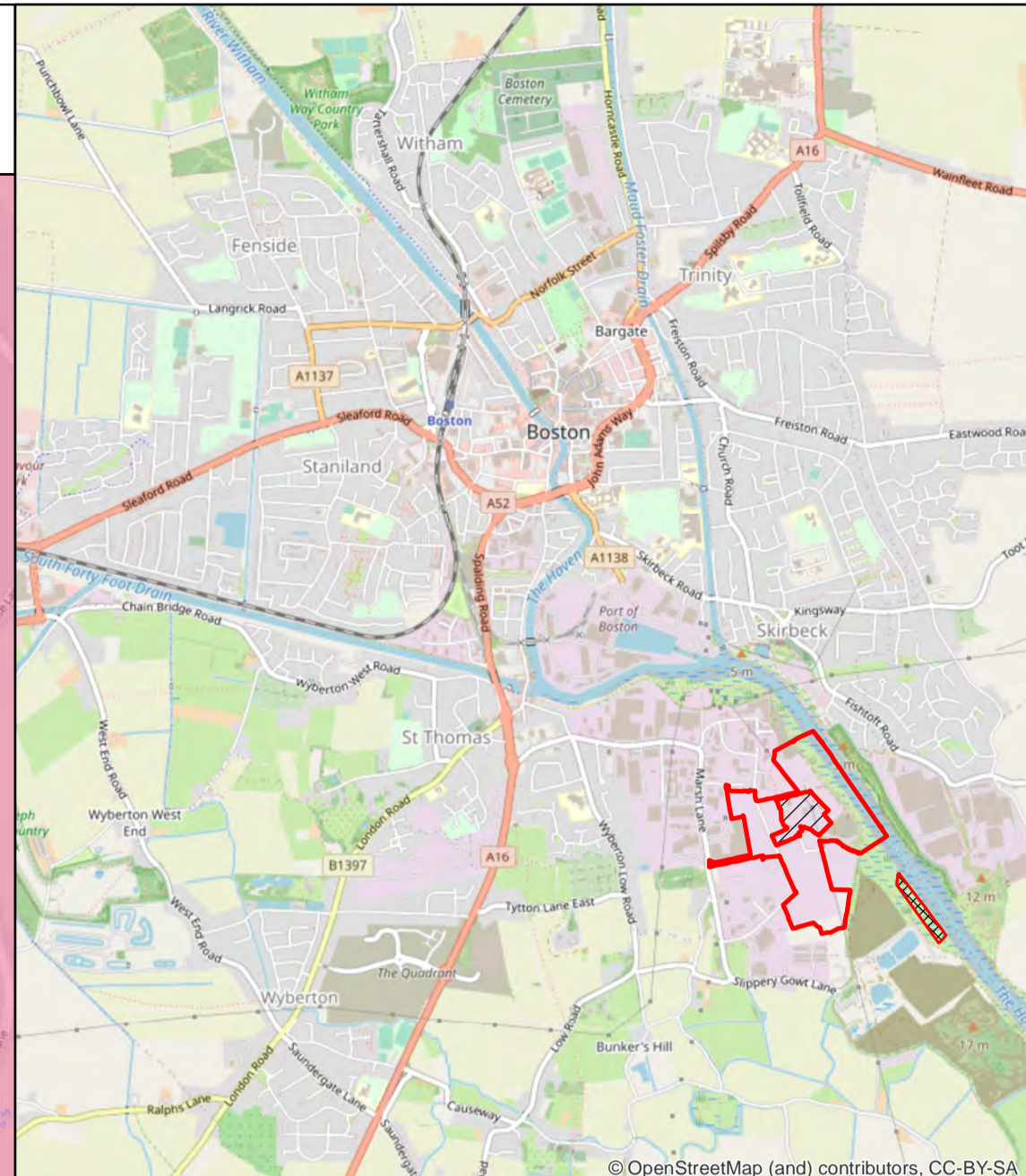
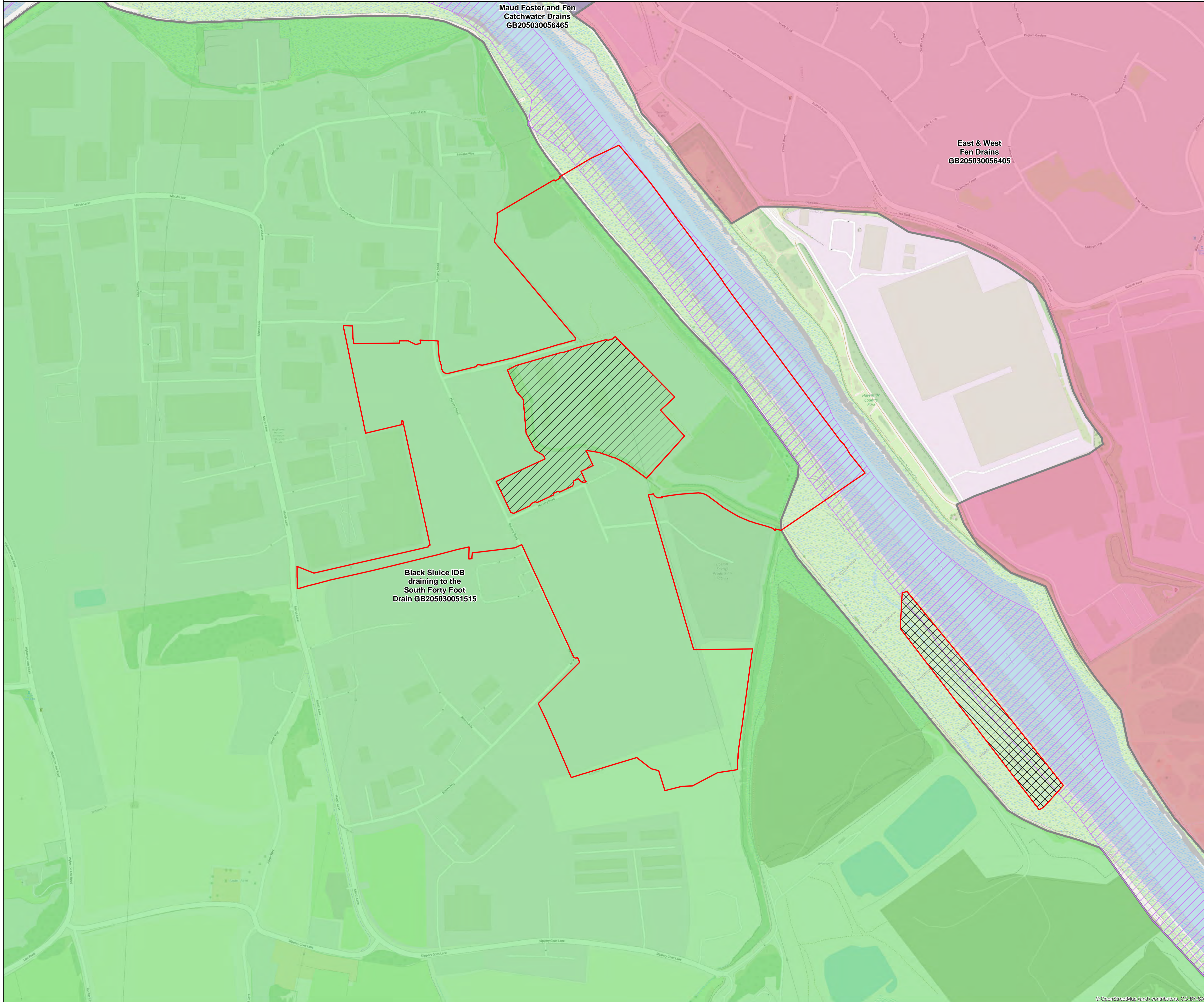
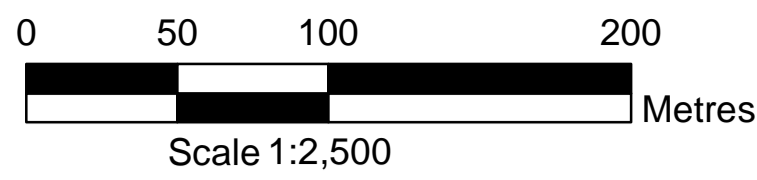
REPRODUCED FROM ORDNANCE SURVEY MAPS
 WITH PERMISSION FROM
 THE CONTROLLER OF
 HER MAJESTY'S STATIONERY OFFICE.
 CROWN COPYRIGHT RESERVED.
 LICENCE NUMBER. 100017728

REV	DATE	DESCRIPTION	BY	CHK	APP
0	19/03/21	For Submission	JT	AG	PS

TITLE **BOSTON ALTERNATIVE ENERGY FACILITY
 DEVELOPMENT CONSENT ORDER**
**Regulation 5(2)(o) Overview of Water Bodies in a River Basin
 Management Plan**
BOSTON BOROUGH COUNCIL - Sheet 1 of 1

Application Number EN010095	
DRAWN JT	CHECKED AG
APPROVED PS	
DATE 19/03/21	SCALE @A1 1:40,000
REF PB6934	
DRAWING NUMBER PB6934-RHD-01-ZZ-DR-4017	STATUS SO
	REVISION 0

BOSTON ALTERNATIVE ENERGY FACILITY DEVELOPMENT CONSENT ORDER
Regulation 5(2)(l)(iii) Water Bodies in a River Basin Management Plan
BOSTON BOROUGH COUNCIL - Sheet 1 of 1



Key

- Order limits
- Habitat Mitigation Area
- Land outside Order limits

Water Framework Directive (WFD) River Water Body Catchment Area

- Black Sluice IDB draining to the South Forty Foot Drain
- East & West Fen Drains
- Maud Foster and Fen Catchwater Drains

Water Framework Directive (WFD) Transitional and Coastal Water Bodies

- Witham

Royal HaskoningDHV
Enhancing Society Together

Rightwell House,
 Bretton,
 Peterborough, PE3 8DW
 Tel +44 (0)1733 334455
 Email info.peterborough@rhdhv.com
 Website www.royalhaskoningdhv.com

APPLICANT **ALTERNATIVE USE
BOSTON PROJECTS LTD**

Disclaimer
 Do not scale from this drawing. Check all dimensions on site before fabrication or setting out. This document is copyright and may not be reproduced without permission of the owner.

REPRODUCED FROM ORDNANCE SURVEY MAPS
 WITH PERMISSION FROM
 THE CONTROLLER OF
 HER MAJESTY'S STATIONERY OFFICE.
 CROWN COPYRIGHT RESERVED.
 LICENCE NUMBER. 100017728

REV	DATE	DESCRIPTION	BY	CHK	APP
0	19/03/21	For Submission	JT	AG	PS

TITLE
BOSTON ALTERNATIVE ENERGY FACILITY DEVELOPMENT CONSENT ORDER
Regulation 5(2)(l)(iii) Water Bodies in a River Basin Management Plan
BOSTON BOROUGH COUNCIL - Sheet 1 of 1

Application Number EN010095			
DRAWN JT	CHECKED AG	APPROVED PS	
DATE 19/03/21	SCALE @A1 1:2,500	REF PB6934	
DRAWING NUMBER PB6934-RHD-01-ZZ-DR-4018		STATUS SO	REVISION 0